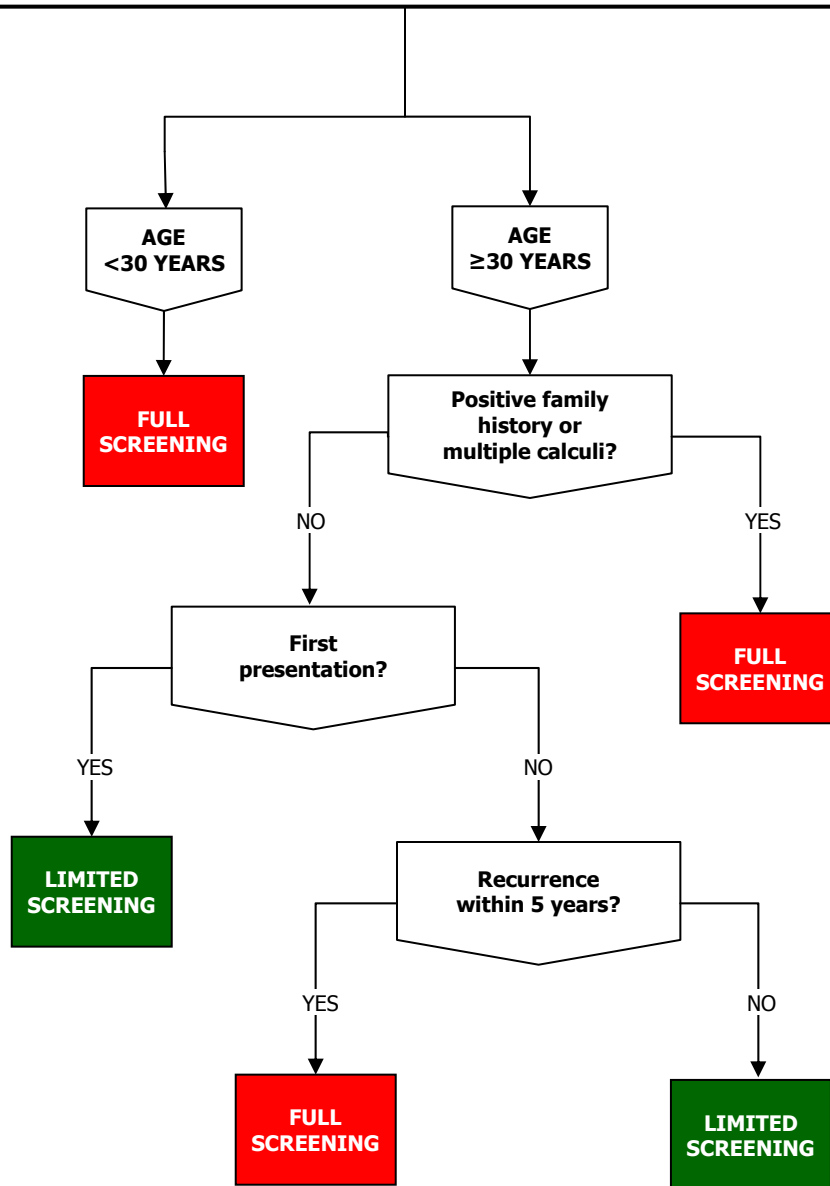


METABOLIC SCREENING FOR STONE DISEASE



LIMITED SCREENING
<ul style="list-style-type: none"> • Stone analysis (if possible) <ul style="list-style-type: none"> • Bone function (BFTs) • Renal function (E&C) <ul style="list-style-type: none"> • Plasma urate • Spot urine for cystine • Early morning urine pH

FULL SCREENING
<p>As for Limited Screening PLUS:</p> <ul style="list-style-type: none"> • 24-hr urine (acid) for calcium, phosphate, oxalate & citrate • 24-hr urine (plain) for urate & sodium